

## MODELS & SPECIFICATIONS

	MFC-J3660DW	MFC-J3960DW
<b>Functions</b>	Print, Scan, Copy, Fax	
<b>General</b>		
<b>Memory</b>	512MB	
<b>Display</b>	2.7" LCD Touch Panel	3.5" LCD Touch Panel
<b>Machine Colour</b>	White	
<b>Colour Print Function</b>		
<b>Print Speed (ESAT)<sup>i</sup></b>	A4: Up to 31 ipm (mono) and 30 ipm (colour)   A3: Up to 14 ipm (mono) and 13 ipm (colour)	
<b>Print Speed (Eco Mode)</b>	Up to 35 ppm (mono) and 32 ppm (colour)	
<b>First Print out time* (FPOT)</b>	Up to 4.6 sec (mono) and 4.4 sec (colour)	
<b>Print Resolution</b>	Up to 1,200 x 4,800 dpi	
<b>2-sided Print</b>	Yes (Up to A3/LGR)	
<b>Borderless Printing</b>	Yes	
<b>Colour Copy Function</b>		
<b>Maximum Copy Size</b>	Up to A3/LGR	
<b>Copy Speed (ESAT/sESAT)<sup>iii</sup></b>	Up to 16 ipm (mono) and 25 ipm (colour)	
<b>Copy Speed (FCOT)<sup>iv</sup></b>	Up to 6 sec (mono) and 5 sec (colour)	
<b>Copy Resolution</b>	1,200 x 4,800 dpi	
<b>Automatic Duplex Copy</b>	NA	Yes
<b>Enlargement/Reduction Ratio</b>	25 - 400 in 1% increments	
<b>N in 1 Copy</b>	2in1/4in1: LGR/LTR/A3/A4/EXE only   2in1(ID): A4/LTR only	
<b>Colour Scan Function</b>		
<b>Maximum Scan Size</b>	Up to A3	
<b>Scan Speed<sup>v</sup></b>	A4 portrait (@200 dpi): 25 ipm/25 ipm   A4 landscape (@200 dpi): 19 ipm/19 ipm   A3 (@200 dpi): 13 ipm/13 ipm	
<b>Scan Resolution</b>	Optical: 1,200 x 2,400 dpi (FB)   Interpolated: Up to 19,200 x 19,200 dpi (For Windows 10/11 with TWAIN)	
<b>Duplex Scanning</b>	NA	Yes (up to A3/LGR)
<b>"Scan To" Feature</b>	Email, Email server, File, FTP, Image, Media, Network (Windows only), OCR	
<b>Fax Function</b>		
<b>Maximum Fax Size</b>	Up to A3 (with ADF & FB)	
<b>Modem Speed</b>	33.6 kbps	
<b>Memory Transmission<sup>vi</sup>/Out of Paper Reception<sup>vi</sup></b>	Up to 150 pages	
<b>Speed Dials</b>	20	
<b>Group Dials</b>	Up to 6 groups	
<b>PC-Fax (mono)<sup>vii</sup></b>	Sending & Receiving	
<b>Connectivity / Networking</b>		
<b>Interface</b>	USB 2.0, WiFi Direct, Wireless Lan (2.4GHz / 5.0GHz)	
<b>Mobile Solutions</b>	Brother Mobile Connect App (for Android/iOS/Harmony OS), AirPrint (for iOS), Mopria, Brother Print Service Plugin (for Android)	
<b>Desktop Solutions</b>	iPrint&Scan Desktop App	
<b>Email Print</b>	iPrint&Scan Desktop App	
<b>Brother's Cloud Apps</b>	Yes	
<b>WebConnect</b>	Yes	
<b>Paper Handling</b>		
<b>Paper Input (Standard Tray)</b>	Up to 250 sheets (80g/m <sup>2</sup> )	
<b>Paper Input (Lower Tray)</b>	NA	Up to 250 sheets (80g/m <sup>2</sup> )
<b>Paper Input (Multi-Purpose Tray)</b>	NA	Up to 100 sheets (80g/m <sup>2</sup> )
<b>Paper Input (Manual Feed Slot)</b>	1 sheet	NA
<b>Paper Output</b>	Up to 100 sheets (up to A4)   Up to 50 sheets (over A4)	
<b>Automatic Document Feeder</b>	Up to 50 pages (80g/m <sup>2</sup> )	
<b>Paper Handling Sizes (Standard Tray)</b>	Landscape: A4, LTR, EXE, B5 (JIS)*   Portrait: A3, LGR, B4 (JIS)*, LGL, Folio, A5, B6 (JIS)*, A6, Photo (10x15cm/4x6"), Indexcard (13x20cm/5x8"), Photo-L (9x13cm/3.5x5"), Photo-2L (13x18cm/5x7"), C5, Com-10, DL Envelope, Monarch, Mexico Legal, India Legal	
<b>Paper Handling Sizes (Lower Tray)</b>	NA	Landscape: A4, LTR   Portrait: A3, LGR, B4(JIS)*, LGL, Folio, Mexico Legal, India Legal
<b>Paper Handling Sizes (Multi-Purpose Tray)</b>	NA	Landscape: A4, LTR, EXE, B5(JIS)*   Portrait: A3, LGR, B4 (JIS)*, LGL, Folio, A5, B6 (JIS)*, A6, Photo (10x15cm/4x6"), Indexcard (13x20cm/5x8"), Photo-L (9x13cm/3.5x5"), Photo-2L (13x18cm/5x7"), Com-10, DL Envelope, Monarch, C5, Mexico Legal, India Legal, Long paper (max length:1200mm)
<b>Paper Handling Sizes (Manual Feed Slot)</b>	Landscape: A4, LTR, EXE, B5 (JIS)*   Portrait: A3, LGR, B4 (JIS)*, LGL, Folio, A5, B6 (JIS)*, A6, Photo (10x15cm/4x6"), Indexcard (13x20cm/5x8"), Photo-L (9x13cm/3.5x5"), Photo-2L (13x18cm/5x7"), C5, Com-10, DL Envelope, Monarch, Mexico Legal, India Legal	NA
<b>Media Type (Standard Tray)</b>	Plain, Inkjet, Glossy, Recycled (Media weight 64-220g/m <sup>2</sup> )	
<b>Media Type (Lower Tray)</b>	NA	Plain, Recycled (Media weight 64-120g/m <sup>2</sup> )
<b>Media Type (Multi-Purpose Tray)</b>	NA	Plain, Recycled (Media weight 64-220g/m <sup>2</sup> )
<b>Media Type (Manual Feed Slot)</b>	Plain, Inkjet, Glossy, Recycled (Media weight 64-220g/m <sup>2</sup> )	NA
<b>Supported OS and Software</b>		
<b>Supported Operating Systems<sup>viii</sup></b>	Windows: 10 / 11 / Server 2016 / 2019 / 2022   MacOS: v13 / v14 / v15 / v26   Linux OS, Chrome OS	
<b>Network Management Tool</b>	Web Based Management	
<b>Supplies</b>		
<b>Ink Cartridge<sup>x</sup></b>	LC572 BK: Approximate Yield 550 A4 pages   LC572 C/M/Y: Approximate Yield 550 A4 pages   LC572XL BK: Approximate Yield 3,000 A4 pages   LC572XL C/M/Y: Approximate Yield 1,500 A4 pages	
<b>Dimensions W x D x H (Weight)</b>		
<b>Without Carton</b>	576 mm x 477 mm x 305 mm (20.0kg)	576 mm x 477 mm x 375 mm (23.3kg)
<b>Others</b>		
<b>Machine Life<sup>*</sup></b>	300,000 pages or 7 years	



Brother  
Earth

Working with you for a sustainable future.



One-stop centre for free downloadable templates



Brother strongly recommends the use of genuine Brother consumable products only. Benefits include better quality print, greater yields per consumable, protection of your machine from damages and achievement of optimum performance. As a precaution, please note that your machine warranty may not cover any damages arising from the use of non-genuine consumables.

Microsoft, Windows, the Windows logo and/or other Microsoft products referenced herein are either registered trademarks of Microsoft Corporation in the U.S. and/or other countries. Brother and its logo are trademarks of Brother Industries Ltd., Japan. All specifications are subject to change without notice. All registered trademarks referenced herein are the property of their respective companies. Brother International Corporation, Japan. All other trademarks are the property of their respective owners. All images are for illustrative purpose only.

\*Only for HK/TW

i Based on ISO/IEC 24734. For more information, please refer to [www.brother.com/rd/printspeed](http://www.brother.com/rd/printspeed)

ii Based on ISO/IEC 17629. For more information, please refer to [www.brother.com./rd/printspeed](http://www.brother.com./rd/printspeed)

iii Based on ISO/IEC 24735 for models with Automatic Document Feeder only. For more information, please refer to [www.brother.com/rd/printspeed](http://www.brother.com/rd/printspeed).

iv Based on ISO/IEC 24735 Annex D

v Based on ISO/IEC 17991

vi Based on ITU-T Test Chart No 1/MMR

vii Receiving is for Windows® only

viii For printing and scanning from Mac, use AirPrint or download iPrint&Scan Desktop App from Mac App Store. Brother iPrint&Scan application supports PDF/JPG/BMP and PNG file format only. MacOS driver is not provided.

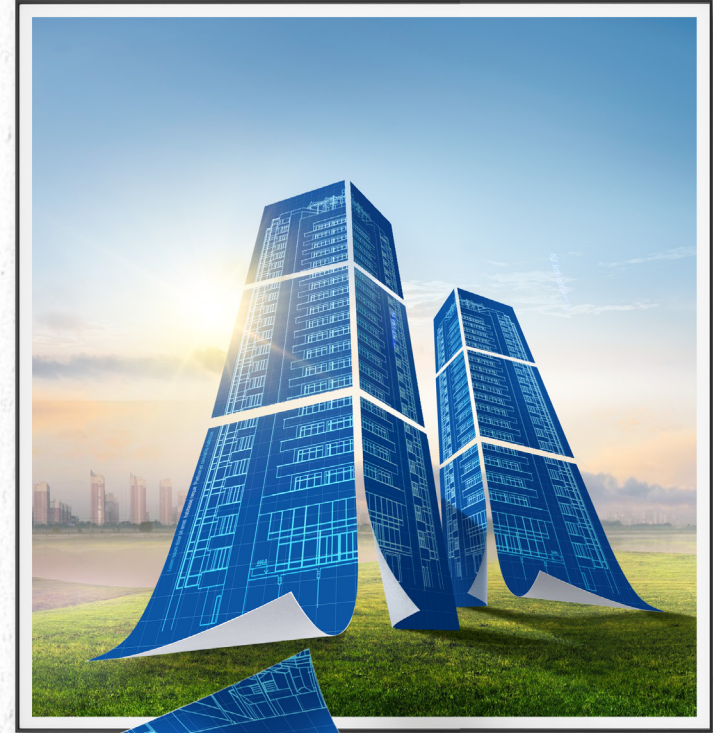
ix Approximate page yield is extrapolated based on Brother original Methodology using Test Patterns ISO/IEC 24712

x Machine life is based on either page count or year tallied, whichever comes first and is based on printer usage under the following conditions: Printer setting: Default settings for all. Media type: Plain paper. Print pattern: ISO/IEC 24712. Environment: Normal temperature and humidity. Measurements are taken based on Brother's internal testing environment. Data for the waste ink pad is based on measurement with assumed monthly usage of 50 to 1,000 pages. To maintain product's quality, the waste ink pad needs to be replaced before reaching the page count or year limit depending on the environment and printer model. Information correct as at the time of publication and may change without prior notice.

brother  
at your side

# YOUR NEXT MASTERPIECE BEGINS WITH BROTHER





J3660DW



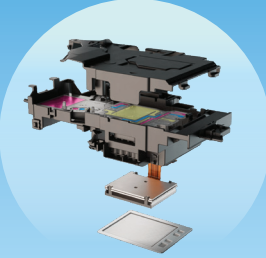
J3960DW

## THE PRINTER FOR BIGGER IDEAS

For over 15 years, Brother has set the benchmark in professional A3 printing. The new generation of A3 Inkjet Multi-Function Printers continues this legacy with faster performance, enhanced security and improved sustainability — designed for professionals who demand precision and reliability in every print.



## PRINT WITH POWER AND PRECISION

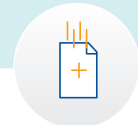


MAXIDRIVE

Experience professional-grade speed with Brother's new and exclusive **MAXIDRIVE technology** for high-volume business printing, delivering up to **31 ipm (A4)** and **14 ipm (A3)** in mono. Print full A3 architectural layouts in seconds without sacrificing quality, with **1,200 x 4,800 dpi** output and built-in self-care technologies for minimal maintenance.

### SELF-CARE TECHNOLOGIES:

- **Ink Clogging Prevention Technology:** Keeps ink in fluid form, removing the need to expel ink from the print head to prevent clogging. This reduces ink wastage and saves cost while ensuring optimal print performance.
- **Ink Discharge Failure Prevention Technology:** Removes microbubbles from ink flow to prevent print interruptions or uneven output, ensuring smooth and consistent printing.
- **Nozzle Sensing Technology:** Detects print head condition and performs automatic self-maintenance, saving repair time and ensuring reliability whenever a print job is needed.



Best-in-class print speed



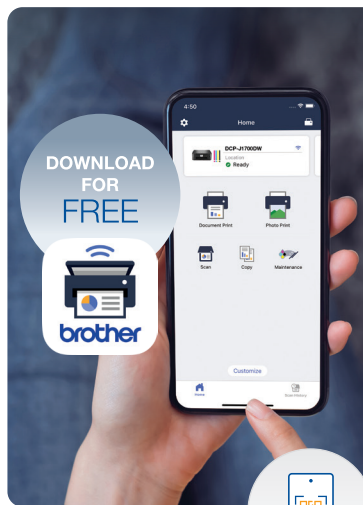
Self-Care Technology for consistent output and lower maintenance



Crisp, high-resolution output up to 1,200 x 4,800 dpi



Automatic duplex printing



DOWNLOAD FOR FREE



Mobile App Setup & Monitoring



Available on App Store & Google Play Store



Wireless & Wi-Fi Direct



Cloud & App Integration

## SMARTER SETUP, EFFORTLESS PRODUCTIVITY

Stay connected and in control with the **Brother Mobile Connect App**, available for download on the App Store and Google Play Store. Print, scan and manage jobs right from your phone or tablet. Enjoy intuitive touchscreen navigation, cloud access and seamless wireless printing that fits the way you work.



## SECURE AND RELIABLE

Protect your data and documents with Brother's comprehensive suite of security functions, ensuring every job, scan and stored file remains confidential and safe.

### AVAILABLE SECURITY FEATURES:

- **Storage Protection:** Encrypts data stored on the MFP to prevent unauthorised access.
- **Secure Scan:** Encrypts scanned data to ensure secure transmission.
- **Secure Print:** Executes print jobs only when the correct password is entered.
- **Secure Function Lock:** Customises accessible functions for each user to maintain full control.



## DURABLE BY DESIGN

Built for heavy workloads, these printers are designed with a **300,000-page machine life**, equivalent to printing around 1,000 pages a week for over five years.

The best-in-class ink management system supports up to **300,000 pages without waste ink pad replacement**, significantly reducing downtime. Boost productivity with a **100-sheet A4 multi-purpose tray**, perfect for diverse media from plain paper to envelopes.



## SUSTAINABILITY IN EVERY DETAIL

Brother's latest A3 Inkjet series features **non-EPS recyclable packaging**, replacing traditional non-biodegradable materials with eco-friendly alternatives. This commitment **reduces environmental impact and landfill waste** without compromising product protection.



Non-EPS recyclable packaging



Environmentally responsible materials



Reduces landfill waste compared to traditional EPS