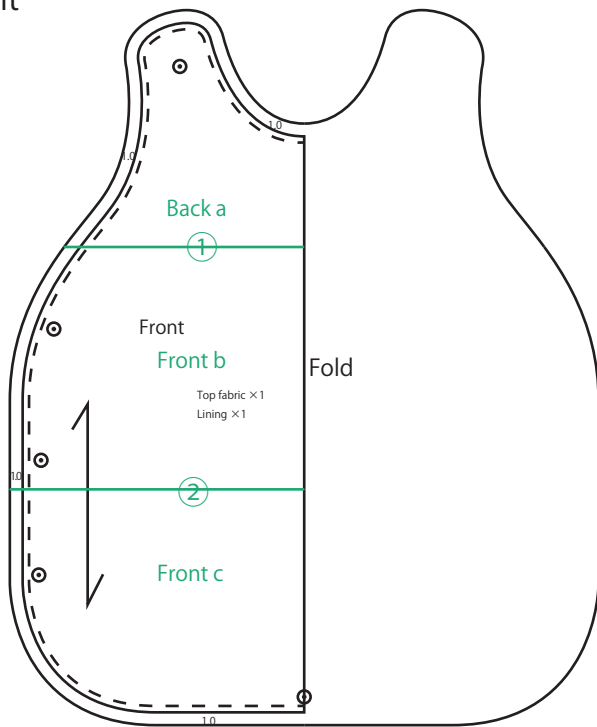


Sleeper gown pattern 🎵

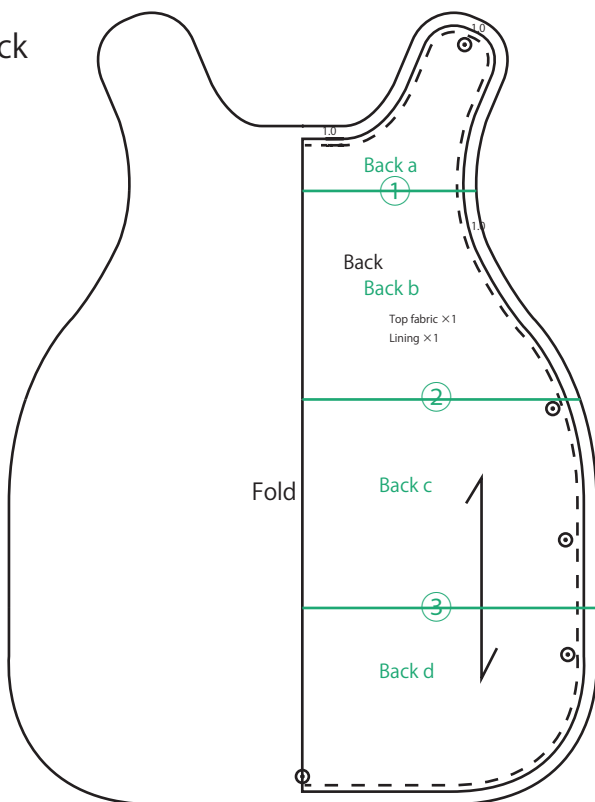
Front



- * The basic seam allowance is 1.0 cm.
- * ——— Cutting line
- * ——— Stitching line
- * Arrows indicate the direction of the fabric grain.

- * Vertically join Front a, Front b and Front c at the joining lines. ① and ②
- * Cutting the fabric will be easier if you cut out the two copies of the pattern, then join them at the fold mark.

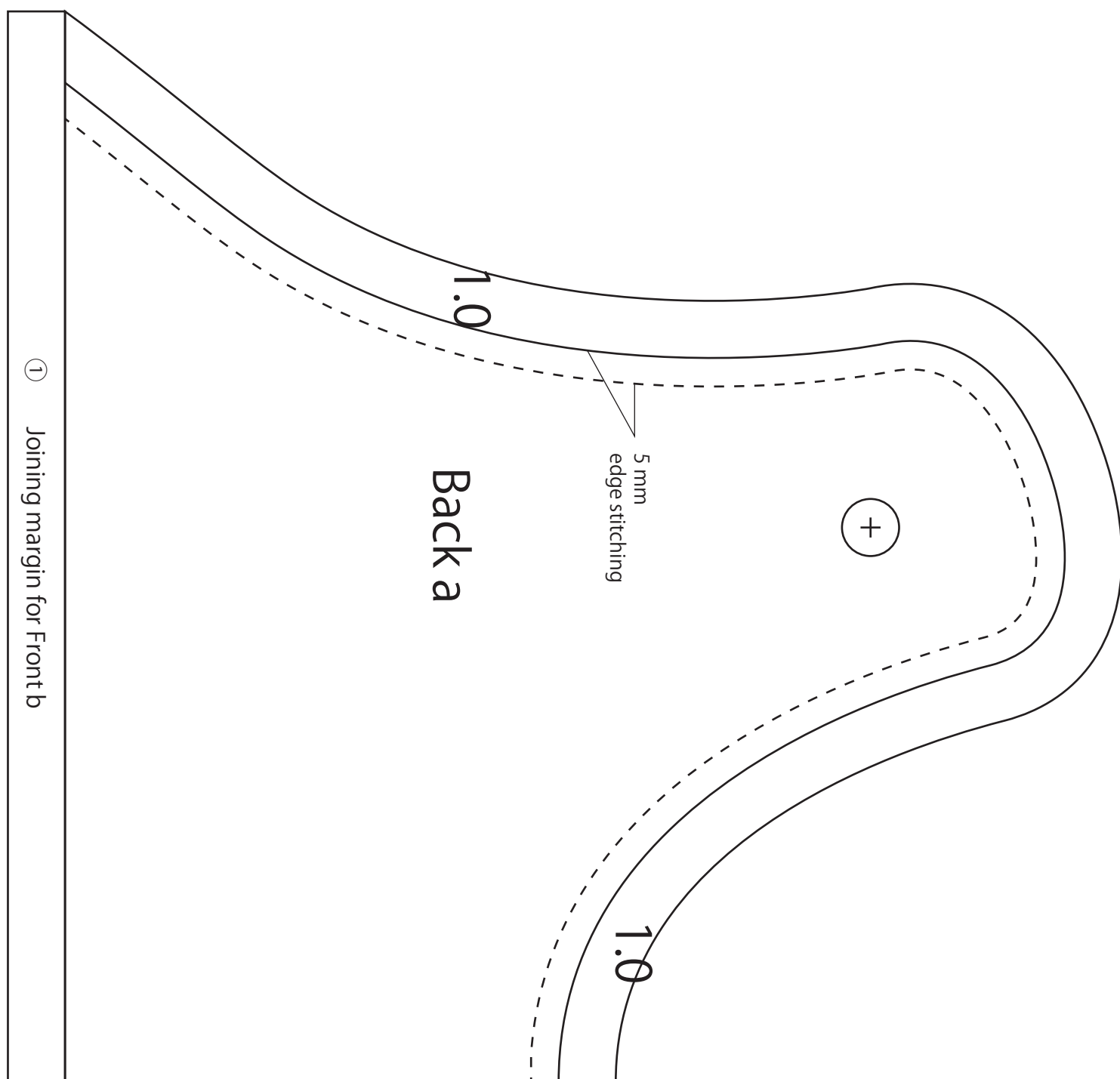
Back



★ The sleeper gown requires 2 patterns (Front and Back).

- * Vertically join Back a, Back b, Back c and Back d at the joining lines. ①, ② and ③
- * Cutting the fabric will be easier if you cut out the two copies of the pattern, then join them at the fold mark.

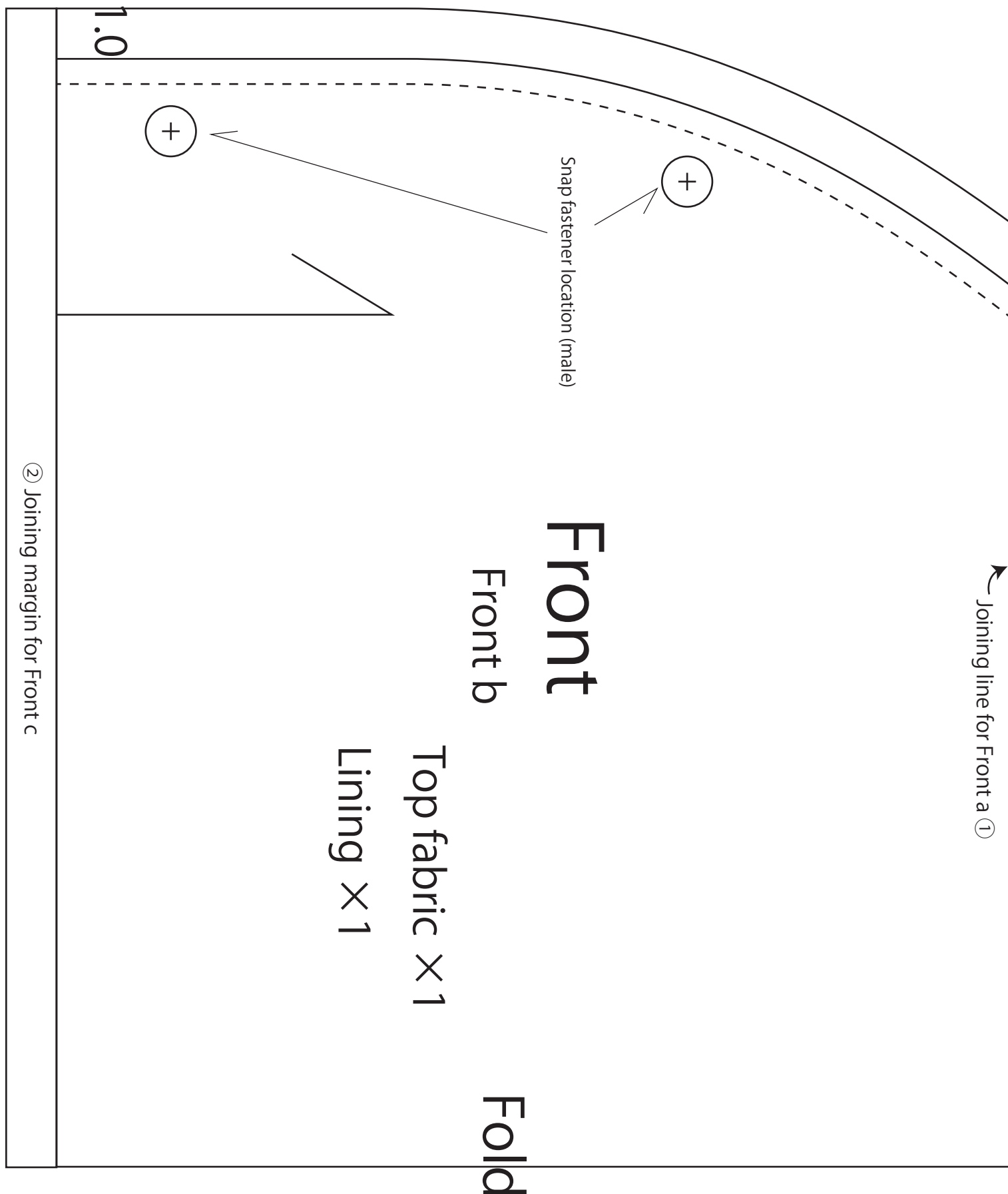
Back a



* Join Front a, Front b and Front c at the joining lines. ① and ②

* Cutting the fabric will be easier if you cut out the two copies of the pattern, then join them at the fold mark.

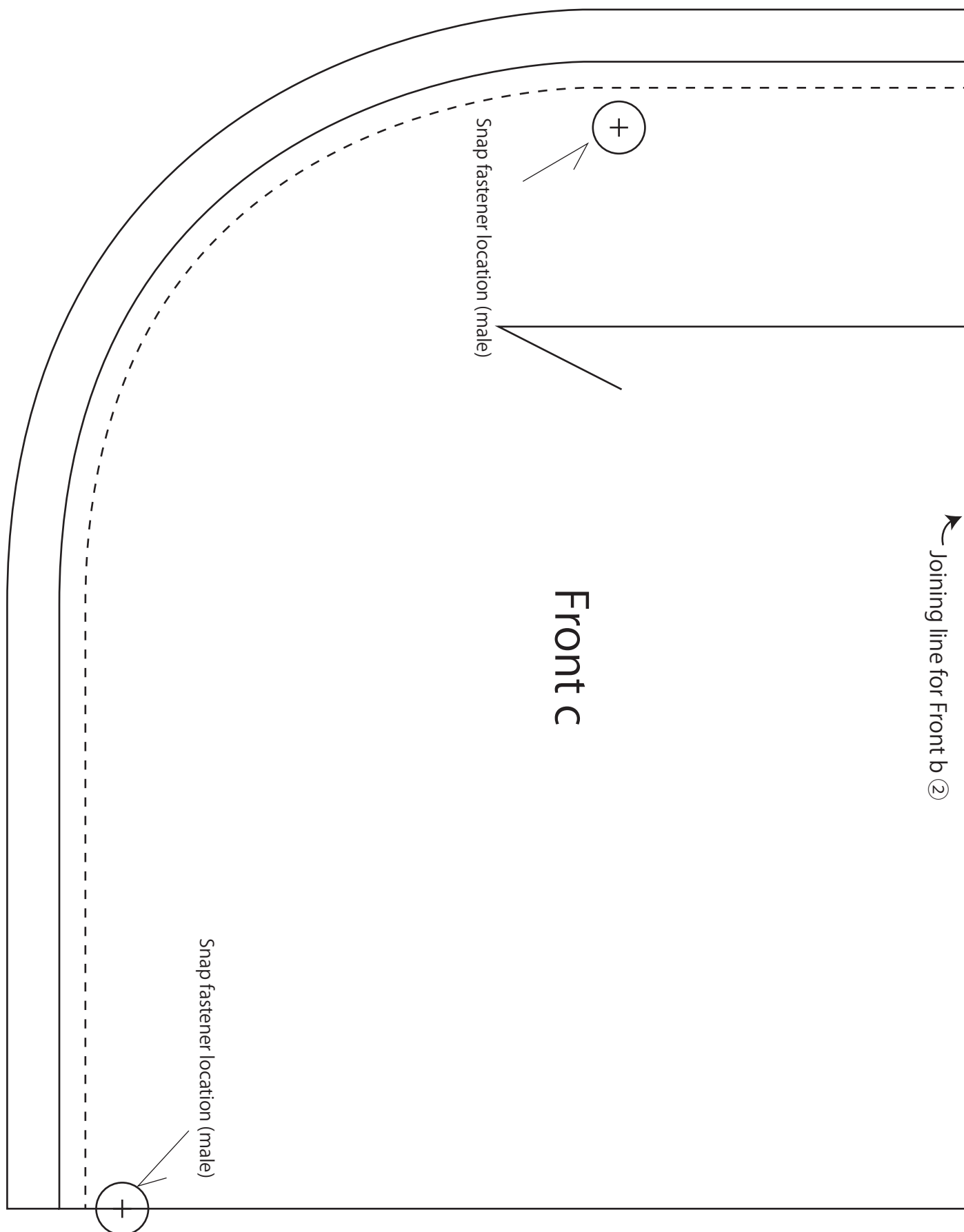
Front b



* Join Front a, Front b and Front c at the joining lines. ① and ②

* Cutting the fabric will be easier if you cut out the two copies of the pattern, then join them at the fold mark.

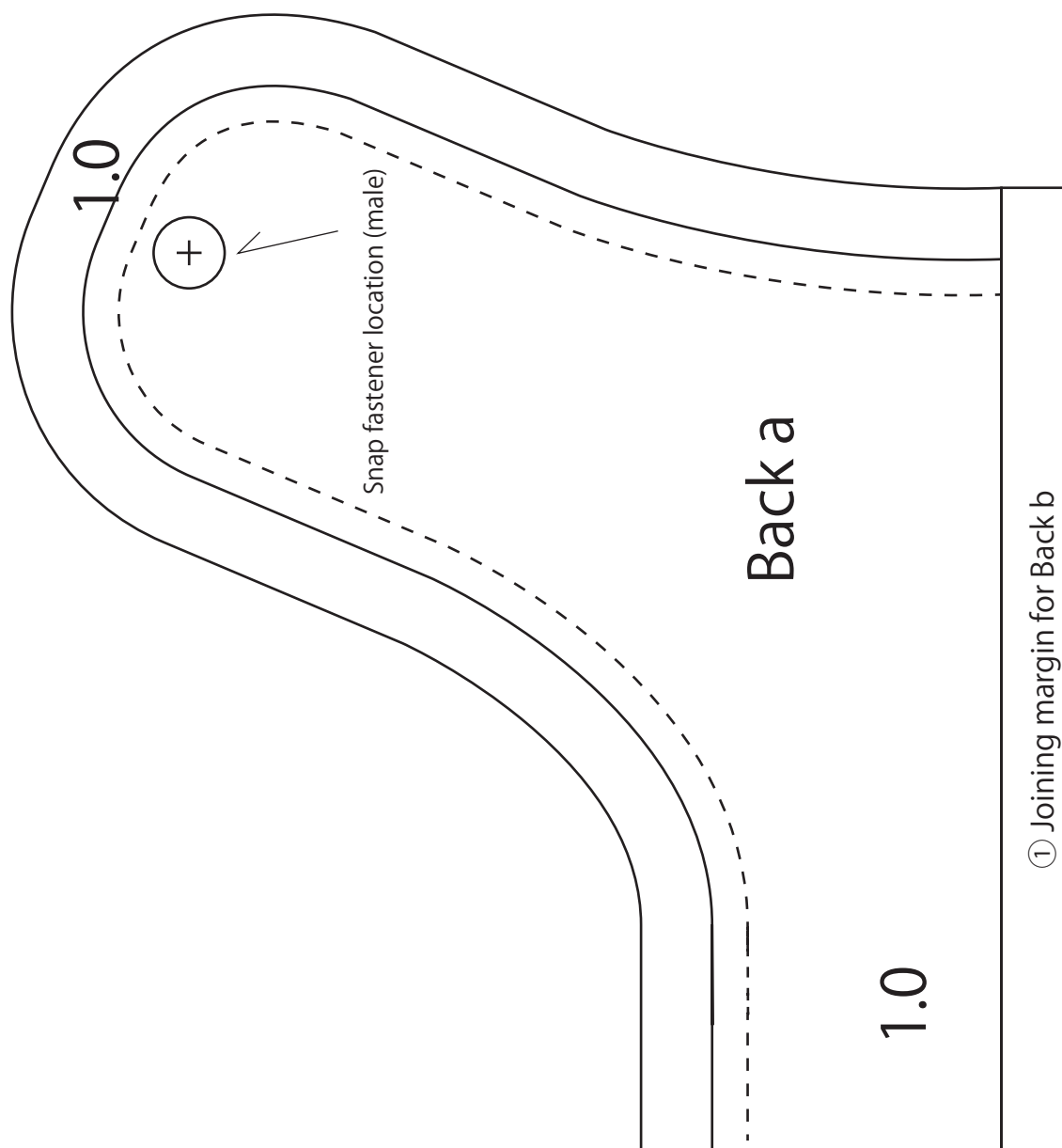
Front c



* Join Front a, Front b and Front c at the joining lines. ① and ②

* Cutting the fabric will be easier if you cut out the two copies of the pattern, then join them at the fold mark.

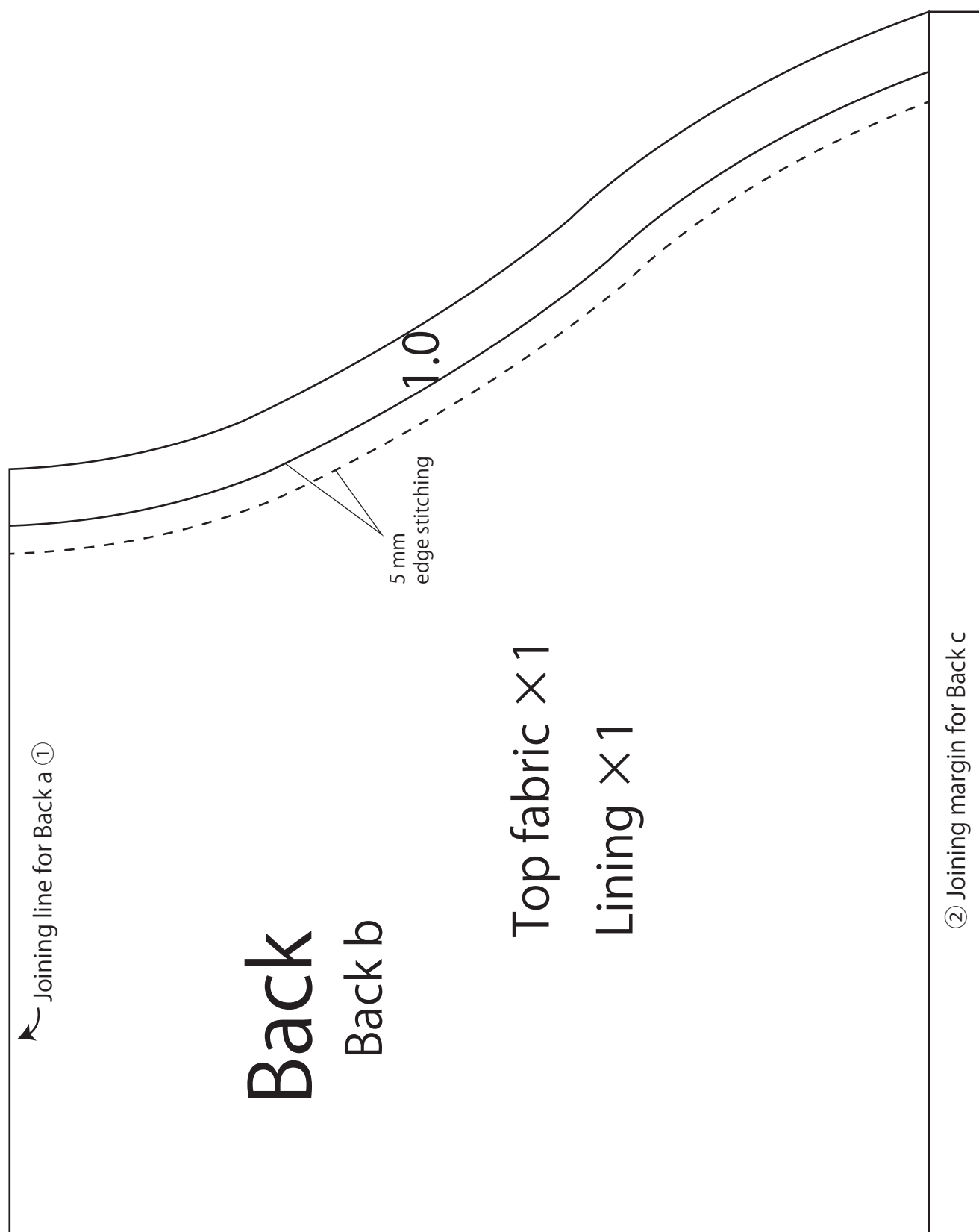
Back a



* Join Back a, Back b, Back c and Back d at the joining lines. ①, ② and ③

* Cutting the fabric will be easier if you cut out the two copies of the pattern, then join them at the fold mark.

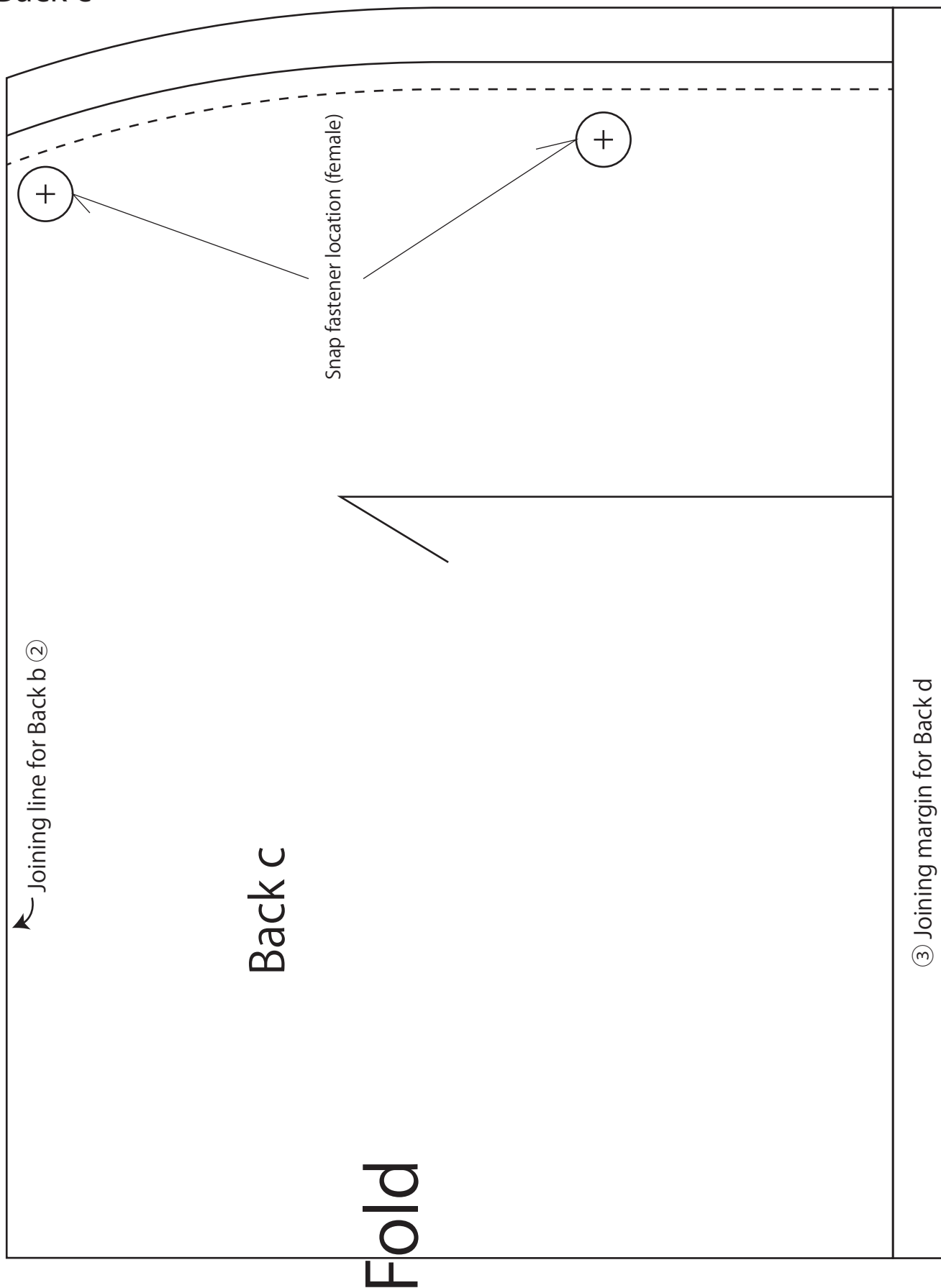
Back b



* Join Back a, Back b, Back c and Back d at the joining lines. ①, ② and ③

* Cutting the fabric will be easier if you cut out the two copies of the pattern, then join them at the fold mark.

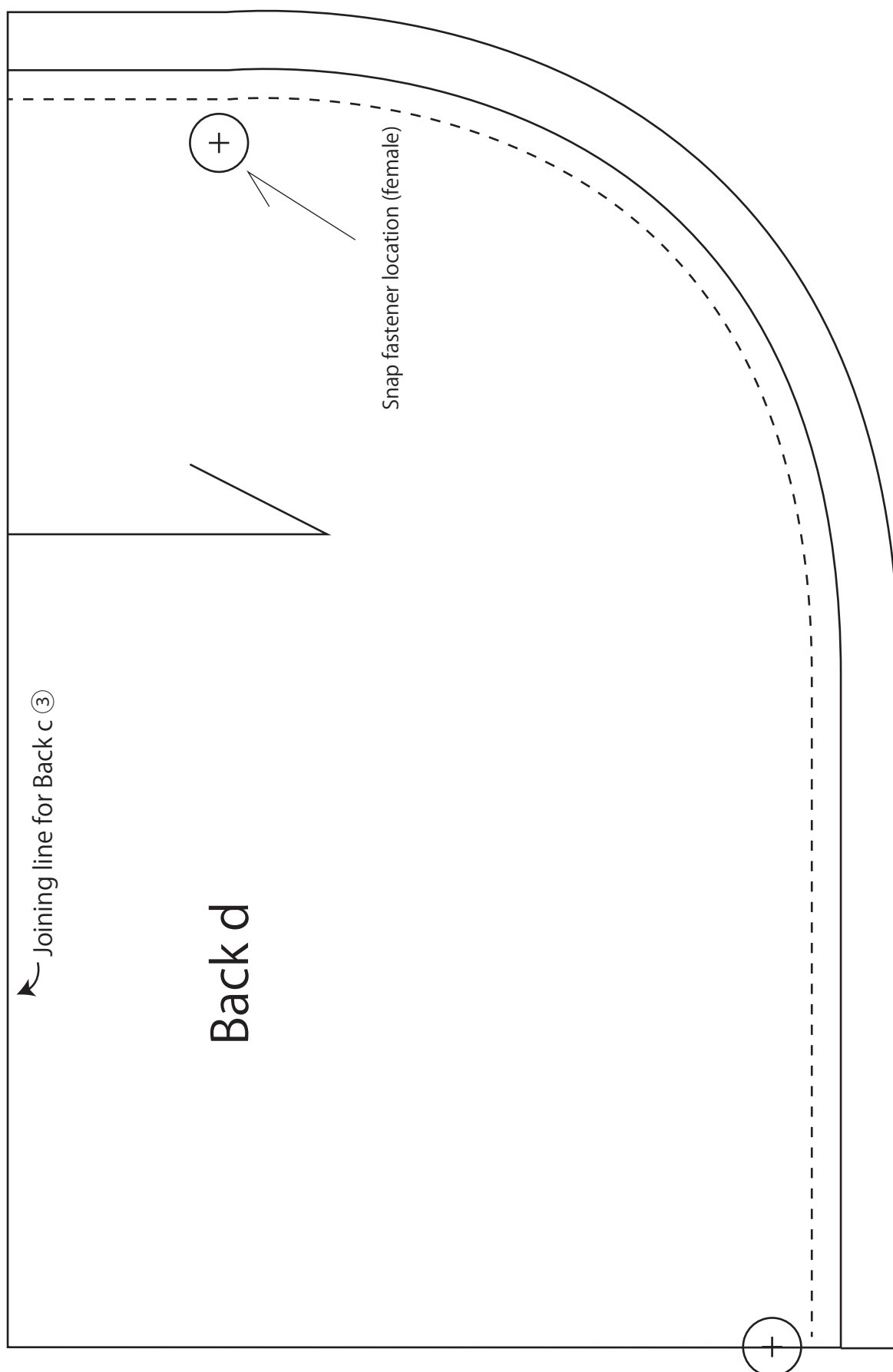
Back c



* Join Back a, Back b, Back c and Back d at the joining lines. ①, ② and ③

* Cutting the fabric will be easier if you cut out the two copies of the pattern, then join them at the fold mark.

Back d



* Join Back a, Back b, Back c and Back d at the joining lines. ①, ② and ③

* Cutting the fabric will be easier if you cut out the two copies of the pattern, then join them at the fold mark.