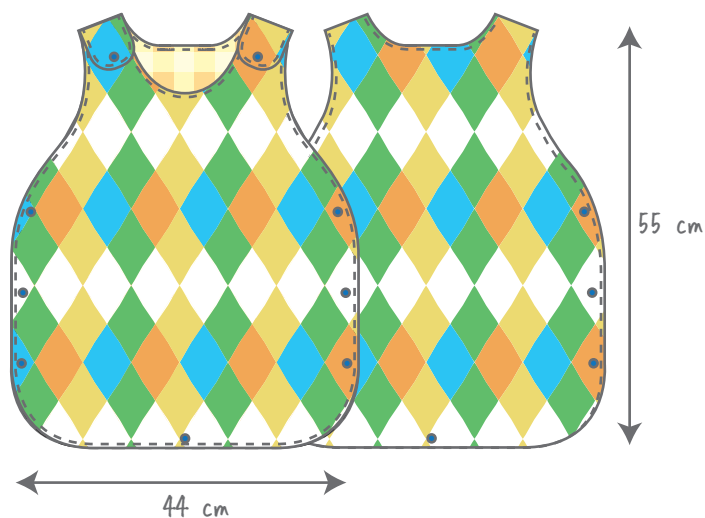


Sleeper gown instructions 🎵



Materials

Top fabric 65 cm X 98 cm X1

Lining 65 cm X 98 cm X1

Snap fastener X9

★ Choose fabrics according to your preferences and requirements, such as fleece for warmth or gauze for softness.

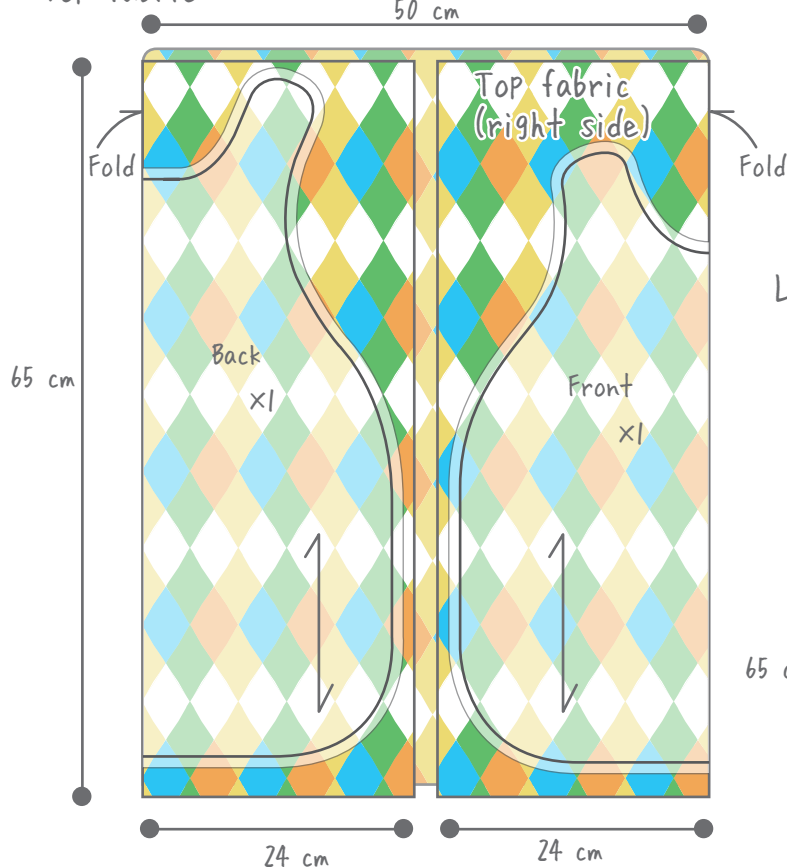
Finished size

Garment length: 55 cm

Garment width: 44 cm

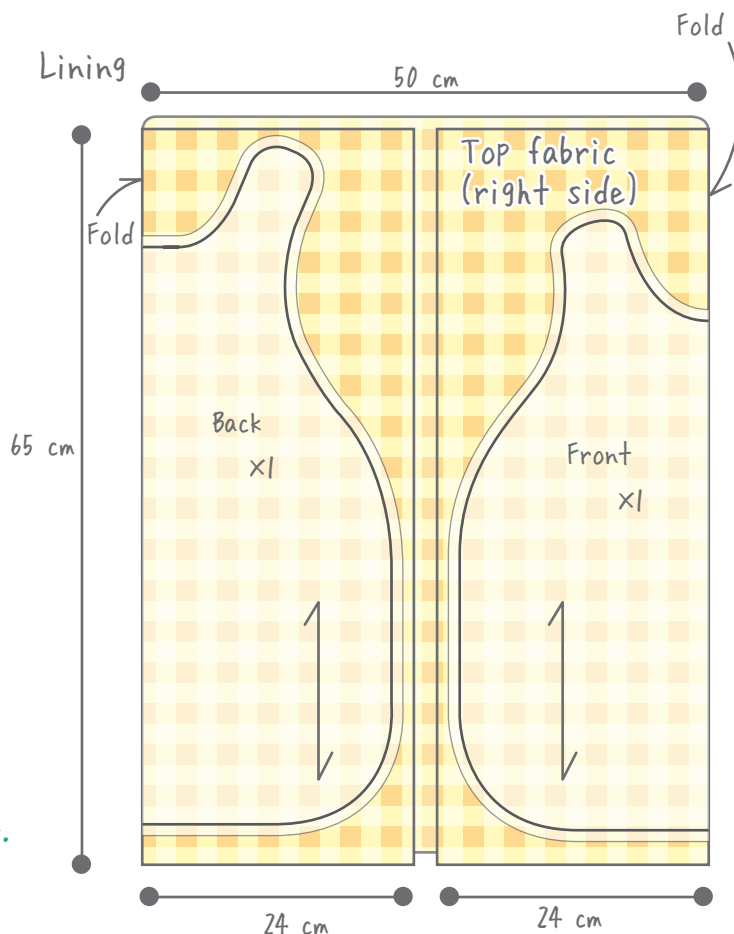
Cutting guide

Top fabric



★ Target size: Since this garment should comfortably wrap the child, it is sized to fit children from infancy to about 5 years of age.

Lining



★ Cut pieces from the top fabric and lining with their right sides out. For marking the fabric, it would be easier if transfer paper was placed between the two layers. Since pieces are sewn with right sides together, it is easier to sew when the markings are on the wrong side of the fabric!

Instructions

* Step 1

Make the garment.

- ① With right sides together, sew the top fabric and lining of the garment front with a 1 cm seam allowance, leaving an opening.

Press the seams.

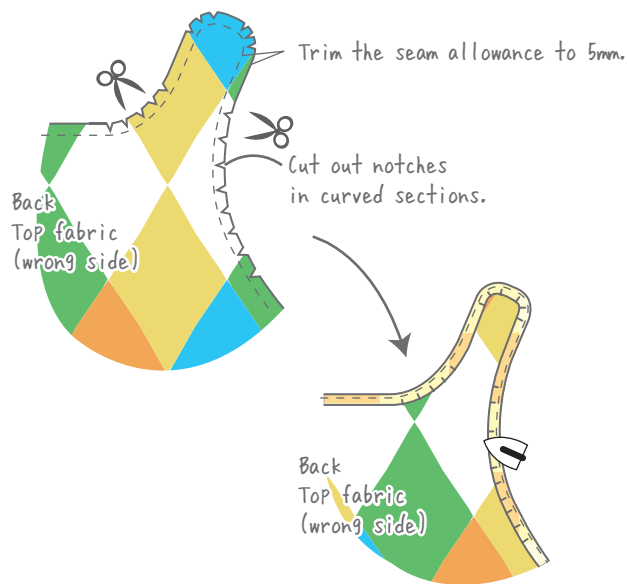
Trim the seam allowance to 5 mm, and then, along curved sections, cut out notches at a right angle to the seam.

Press the seam allowances toward the top fabric, and then turn right side out.

Do this for the garment back as well.

Note

- Sew reverse stitches at the beginning and end of stitching.
- If desired, attach pockets or sew embroidery to the top fabric before sewing it to the lining.
- When cutting out notches, be careful that the seam is not cut.
- When turning right side out, an awl may be useful for turning out the narrow sections of the shoulder.



Turn right side out.



- ② Stitch 5 mm from the edge, all around. (Close the opening with the stitching.)

Press the seams.

Do this for the garment back as well.

Note

Sew reverse stitches at the beginning and end of stitching.



* Step 2

Finishing

③ Attach the snap fasteners.

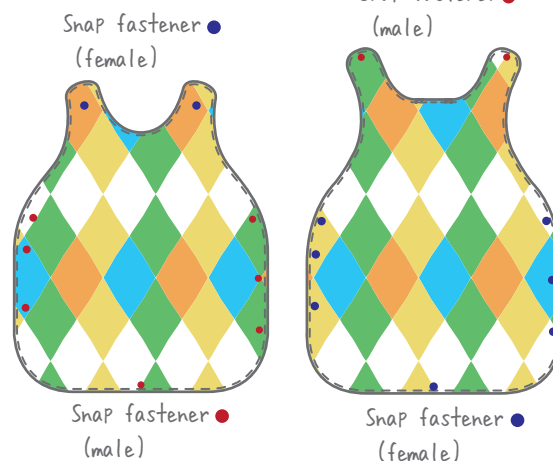
Attach the snaps according to snap fastener locations indicated on the patterns.

Note

The snap fasteners have a male and female side. Be sure to attach them at their correct locations.

Overlap the garment front and back, and then snap together. You are now finished!!

Fig. ①



The warm sleeper gown 🎵 is finished!!

★ Redesign as desired!!



Your choice of materials and fabric patterns greatly changes the appearance.

Create greater customization with pockets or your favorite detailing!!



Alter the length according to the size of the child. ★

Try customizing one of these sleeper gowns to the desired length 🎵 using your favorite fabric and detailing!