

# BRAdmin Professional 4

The Fleet Management Tool  
for Brother Devices





## Monitor All Your Printing Devices At Once

BRAdmin Professional 4 (Windows only) is a management tool for network-connected Brother devices and other SNMP-compliant network printing devices.

You are able to view the status and activity of all networked devices, such as error status, remaining supply levels, page count, and more, through an Explorer-style window.

The grouping function lets you organise devices into groups and apply one device's data to multiple devices at once. BRAdmin Professional 4 allows IT Administrators to view devices in a familiar GUI to quickly track and manage their fleet.

## Benefits of BRAdmin Professional 4

- ✓ Easy management and enhanced visibility by monitoring and controlling of devices with real-time updates
- ✓ Protects fleet with secure access to machine settings and configuration
- ✓ Reduce time and manpower costs with centralised control on a single platform
- ✓ Zero-cost printer management software
- ✓ Configure passwords for individual users and setting page limits or colour printing
- ✓ Improves productivity with enhanced automation by easily duplicating and reverting to original settings

## Features of BRAdmin Professional 4

### Instant task

Create Instant Tasks that takes place with immediate effect on a centralised platform. Tasks include:

- Update of printer firmware
- Reboot device
- Edit device settings
- Activate custom software solutions
- Send files to devices
- Backup settings
- Reset network settings

### Device Log

Improve management and control of your fleet with the device usage log of all devices in your office. The downloadable log consists of meter reading and detailed usage of each device.

Notifications of device status and usage can be emailed automatically according to your preferred settings.

### Device Notification

Send real-time updates of machines errors. Configure email notifications to send only important errors that require the attention of the administrator or stakeholder.

Notification items:

☒ All errors:

- ☒ Toner/ink low
- ☒ Replace toner/ink
- ☒ Replace drum
- ☒ Consumable warning(user - repairable)
- ☒ Consumable error(user - repairable)
- ☒ Consumable warning(requires service engineer)
- ☒ Consumable error(requires service engineer)
- ☒ Cover open
- ☒ Paper jams
- ☒ Memory errors
- ☒ Paper input errors
- ☒ Paper output errors

☒ Installation errors

- ☒ Hardware/Mechanical errors
- ☒ Miscellaneous errors
- ☒ Drum Stop
- ☒ Belt unit
- ☒ Belt near end
- ☒ Belt replace end
- ☒ Waste box/tank
- ☒ Waste toner box/Waste tank alert
- ☒ Replace waste toner box/waste tank full
- ☒ Replace fuser unit
- ☒ Replace laser unit
- ☒ Replace PF kit

☒ Send an e-mail when the problem is resolved

### Network Setting

Configure various network and email server settings at your fingertips.

Application settings

General

Device discovery

SNMP

SNMP version:

- ☒ Enable SNMP v1 only
- ☐ Enable SNMP v1 and v2

Community name:

- Get: public
- Set: internal

SNMP v1 settings:

- SNMP v1 settings: 800

Back up/Restore

General

Device discovery

SNMP

SNMP version:

- ☒ Auto
- ☐ Manual

Device name:

- Host: 192.168.1.100
- User name: admin
- Password: 123456

Back up/Restore

General

Device discovery

SNMP

SNMP server address:

- Server name: 192.168.1.100
- Port: 161

Authentication method:

- ☒ None
- ☐ SNMP-AUTH

SNMP user SSL/TLS:

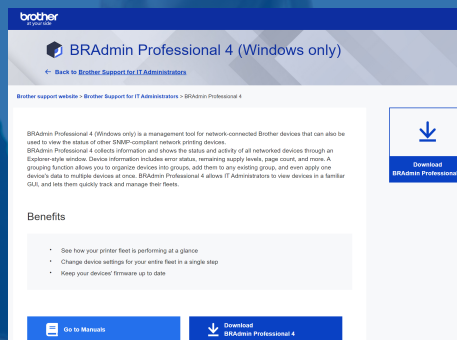
- ☒ None
- ☐ SSL
- ☐ TLS

Back up/Restore



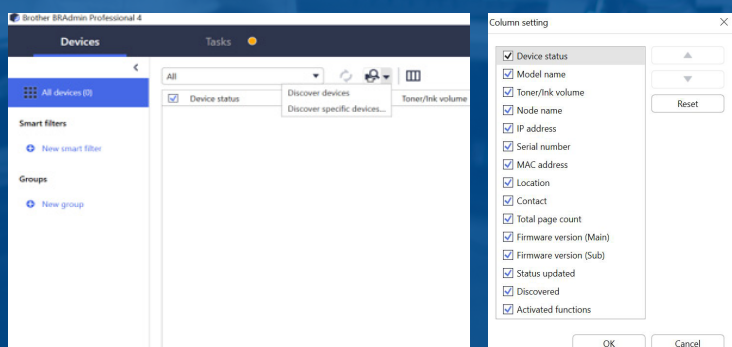
# Getting started

- 1 Download BRAdmin Professional 4 and install the software on your Windows PC.

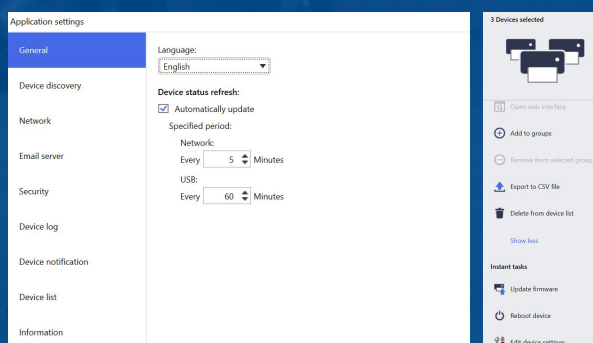


Detailed manual is available for download at <https://bit.ly/2LrtiG3>

- 2 Click “Discover machine” and all Brother machines within your network will be displayed. You will be able to see an overview of each machine: serial number, total page count, firmware version, IP address and network details.



- 3 Conveniently manage all machines within the network by selecting various tasks and configurations easily through the centralised platform. You can also access each individual machine using the web interface (EWS) from BRAdmin Professional 4.



Brother strongly recommends the use of genuine Brother consumable products only. Benefits include better quality print, greater yields per consumable, protection of your machine from damages and achievement of optimum performance. As a precaution, please note that your machine warranty may not cover any damages arising from the use of non-genuine consumables.