

PE-DESIGN PLUS

brother®  
at your side



# PE-DESIGN PLUS

PERSONAL EMBROIDERY DESIGN SOFTWARE SYSTEM



## PE-DESIGN PLUS

Create original embroidery easily

- Wide variety of stitches and embroider designs
- Editable hoop sizes and brother hoop selections up to 200 mm × 300 mm
- Multiple formats available for import and export (.pes, .dst, .hus, .exp, .pcs, .vip, .sew, .jef, .csd, .xxx, and .shv).

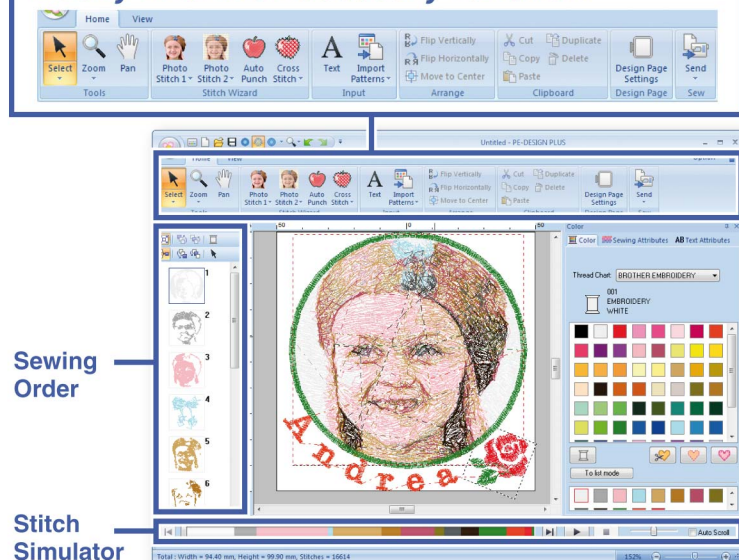


# Create original embroidery easily.

## Easy-to-use User Interface

The PE-DESIGN PLUS provides quick and easy access to all available features.

### Easily find the necessary function



## Image To Stitch Function

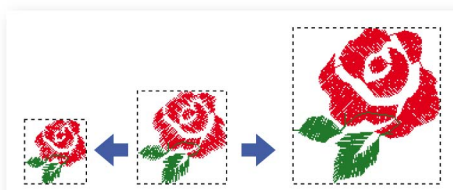
Turn your favorite photo or illustration files into embroidery designs.



## Resize Without Changing Density

PE-DESIGN PLUS makes it not only easy to change the sizes of your embroidery designs, but you can also increase and decrease the size of your designs without changing the stitch density.

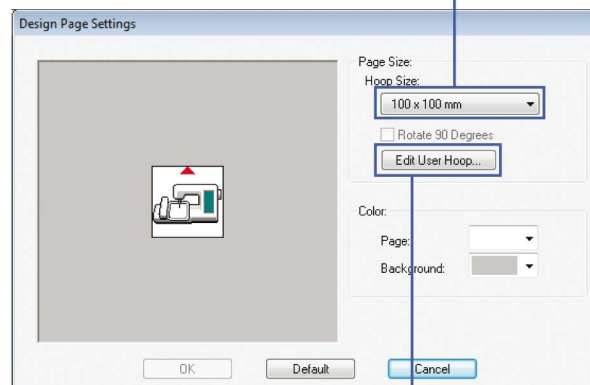
- Greatly Enlarging/Reducing Stitch Pattern



## Various hoop sizes

### Brother hoop selections

100 × 100 mm, 130 × 180 mm,  
160 × 260 mm, 180 × 300 mm,  
200 × 200 mm, 200 × 300 mm,  
100 × 180 mm (Border Frame)

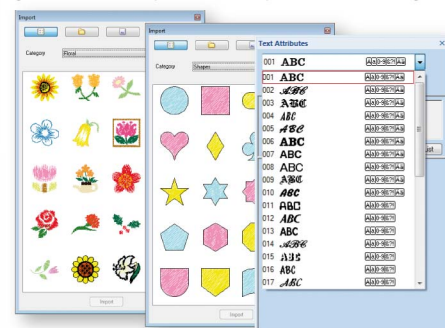


### Editable hoop size

You can set hoop size for every 1mm.

## Extensive collection of built-in fonts and designs

35 fonts and an extensive library of sample graphics help you create your ideal designs.



## PE-DESIGN PLUS Package Contents



### Minimum PC Requirement

Before installing the software on your computer, make sure that the computer meets the following requirements.

Computer	IBM PC or compatible computer	Hard disk free space	200MB
Operation System	Windows® XP / Windows VISTA® / Windows® 7 (32 or 64 bit)	Monitor	XGA(1024x768), 16bit colour or higher
Processor	1GHz or higher	Port	1 available USB
Memory	512MB (1GB or more is recommended)	CD-ROM drive	Required for installation

Windows® is a registered trademark of Microsoft Corporation in the US and/or other countries. All other brand and product names are registered trademarks or trademarks of their respective companies.  
SPECIFICATIONS ARE SUBJECT TO CHANGE WITHOUT NOTICE.

### Contact

**brother**  
at your side

### Brother International (HK) Ltd.

Unit 620-622&626, 6/F, Ocean Centre, 5 Canton Road, TST, KLN, H.K.

[www.brother.com.hk](http://www.brother.com.hk)

Hotline: 3187 0500

Office hour: 9:00am - 6:00pm (Mon - Fri)