

Specifications

QL1110NWB

DK TAPE

DK LABEL

DK rolls for the QL1100NWB label printer

Brother QL1110NWB

brother  
at your side

Printing / Media	
Printing technology	Direct Thermal
Maximum Resolution (dpi)	300 x 300
Maximum Print Speed (labels per min.)*	Up to 69 labels per minute
Tape Sizes	Die-cut and Continuous
Maximum Tape Width (mm)	103.6mm
Maximum Print Width (mm)	101.6mm
Maximum Label Length	1 metre
Cutter	Auto
Cutter Life	Up to 300,000 (die-cut labels) 150,000 (continuous labels)
Connectivity	
USB	USB version 2.0 full-speed
USB host capability	Yes (HID class)
Bluetooth® wireless technology	Bluetooth 2.1+EDR
Bluetooth® profiles	SPP(Serial Port Profile) OPP(Object Push Profile) BIP(Basic Imaging Profile) HCRP(Hard Copy Cable Replacement Profile) iAP(MFi supported) profile
Wireless LAN	IEEE802.11b/g/n
Wireless LAN security (Infrastructure mode)	WEP, WPA-PSK/WPA2-PSK (TKIP/AES), LEAP (CKIP), EAP-FAST (TKIP/AES), PEAP (TKIP/AES), EAP-TTLS (TKIP/AES), EAP-TLS (TKIP/AES)
AirPrint®	Yes
Wired LAN	10/100 Base-TX
Mobile Device Compatibility	
Software/App^	AirPrint®, Brother iPrint&Label, free app download for wireless printing from your Apple® or Android™ mobile device
Memory	
Flash (for label templates)	7.8MB
Locations (for label templates)	255
Environment	
ENERGY STAR® certified	Yes
Weights / Dimensions	
Operating System	PC: Windows 10, Windows 8/8.1, Windows 7, Windows Server 2008, 2008 R2, 2012, 2012 R2, 2016, Mac: OS X® v10.11.x - v10.13.x
SDK availability (visit <a href="http://www.brother-usa.com/lp/civ/home.aspx">http://www.brother-usa.com/lp/civ/home.aspx</a> )	b-PAC (for Windows) Brother Print SDK for Android™ Brother Print SDK for iPhone/iPad (for iOS)
Supported printer commands	Raster, ESC/P, P-touch Template
Barcode symbologies (using P-touch Editor)	CODE39, CODE128, UCC/EAN128(GS1-128), ITF(I-2/5), CODABAR(NW-7), UPC-A, UPC-E, EAN13, EAN8, ISBN-2(EAN13 AddOn2), ISBN-5(EAN13 AddOn5), Laser Barcode, POSTNET, RSS(RSS14 Standard, RSS14 Truncated, RSS14 Stacked, RSS14 Stacked Omni, RSS Limited, RSS Expanded, RSS Expanded Stacked), PDF417(Standard, Truncate, Micro), QR code(Model1, Model2, Micro), Data Matrix(ECC Square, ECC Rectangular), MaxiCode(Model2, Model3, Model4, Model5) RSS symbols / CODE93 / POSTNET / UPC/EAN EXTENSION / MSI / QR Code (model 1, model 2, micro QR)(PDF417 (Standard, Truncate, Micro)(PDF417) / Data Matrix(ECC200 Square, ECC200 Rectangular) / MaxiCode / Aztec (Windows only), IMB
Barcode symbologies (Built-in printer firmware)	CODE39, CODE128, UCC/EAN-128(GS1-128), ITF(I-2/5), CODABAR(NW-7), UPC-A, UPC-E, EAN13(JAN13), EAN8, GS1 DataBar(RSS)(GS1 DataBar Omnidirectional,GS1 DataBar Truncated,GS1 DataBar Stacked,GS1 DataBar Stacked Omnidirectional,GS1 DataBar Limited,GS1 DataBar Expanded,GS1 DataBar Expanded Stacked), PDF417(Standard, Truncate, Micro), QR Code(Model 1, Model 2, Micro), Data Matrix (ECC200 Square, ECC200 Rectangular), MaxiCode, CODE93, POSTNET, UPC-E EXTENTION, MSI, Aztec
Internal fonts	Bitmap fonts: Letter Gothic Bold, Helsinki, Brussels, San Diego, Brougham Font sizes: 24, 32, 48 dots Outline fonts: Letter Gothic Bold, Helsinki, Brussels Font sizes: 33-400 dots (22 sizes)
Date/Time Stamp	PC generated
Included items	
In the box	P-touch Editor Software & Driver (Web Download), AC Power Cable, USB Cable, Sample Rolls: DK11247 Diecut Large Shipping Labels; DK22205 Continuous Length Paper Tape – 62mm
Weights / Dimensions	
Dimensions (mm)	170mm (W) x 222mm (D) x 151mm (H)
Weight (kg)	1.74 kg

\* Based on using standard address labels, text only, at 300 x 300 dpi.  
^ Requires connection to a wireless network.  
• There is a chance that you can't print in full width depending on your environment. For the details, see our website, support.brother.com. Note: We recommend designing with enough margin, because there is a possibility of cut off if the paper is not fed in straight.

Wide range of labels available in paper and plastic film material, pre-sized labels or continuous rolls

DK Die-Cut Labels	Material	Colour	Size	Item No.
Standard address label (400/roll)	Paper	White	29 x 90 mm	DK11201
Large address label (400/roll)	Paper	White	38 x 90 mm	DK11208
Small address label (800 roll)	Paper	White	29 x 62 mm	DK11209
Shipping label (300/roll)	Paper	White	62 x 100 mm	DK11202
File folder label (300/roll)	Paper	White	17 x 87 mm	DK11203
Multi-purpose label (400/roll)	Paper	White	17 x 54 mm	DK11204
CD/DVD label (100/roll)	Film	White	58 mm	DK11207
Large Shipping label (180/roll)	Paper	White	103 x 164 mm	DK11247

DK Continuous-Length Tapes - 30.48m	Material	Colour	Size	Item No.
Continuous-length	Paper	White	29 mm	DK22210
Continuous-length	Paper	White	62 mm	DK22205
Continuous-length	Paper, removable	White	62 mm	DK44205
Continuous-length	Paper, removable	Yellow	62 mm	DK44605

DK Continuous-Length Tapes - 15.24m	Material	Colour	Size	Item No.
Continuous-length	Film	White	29 mm	DK22211
Continuous-length	Film	White	62 mm	DK22212
Continuous-length	Film	Yellow	62 mm	DK22606
Continuous-length	Film	Clear	62 mm	DK22113
Continuous-length - Black/Red print	Paper	White	62 mm	DK22251

www.brother.com.hk

Contact:

brother  
at your side

Brother International (HK) Ltd.  
Units A&B, 12/F, KC100, No.100, Kwai Cheong Road, Kwai Chung, NT, H.K.  
Email: [inquiry@brother.com.hk](mailto:inquiry@brother.com.hk)  
☎Hotline : 3187 0500    [www.brother.com.hk](http://www.brother.com.hk)

PT043



## Wide Format, Professional label printer range

- Prints on labels up to 102mm wide, capable of printing shipping postage labels for packages.
- Wide range of connectivity options.
- PC, Mac®, iOS and Android™ compatibility.
- High speed printing of up to 69 labels per minute\*.
- Use continuous rolls and cutter to print labels up to one metre in length.
- Automatic Crop function lets on-line sellers easily print product and other barcode labels from A4/Letter size label sheet templates (Windows only)



\* Based on using standard address labels, black text only, at 300 X 300 dpi.





The Brother QL1100NWB professional label printer offer unrivalled versatility not only in the office, but also warehouse, postal, facilities management and other industries.

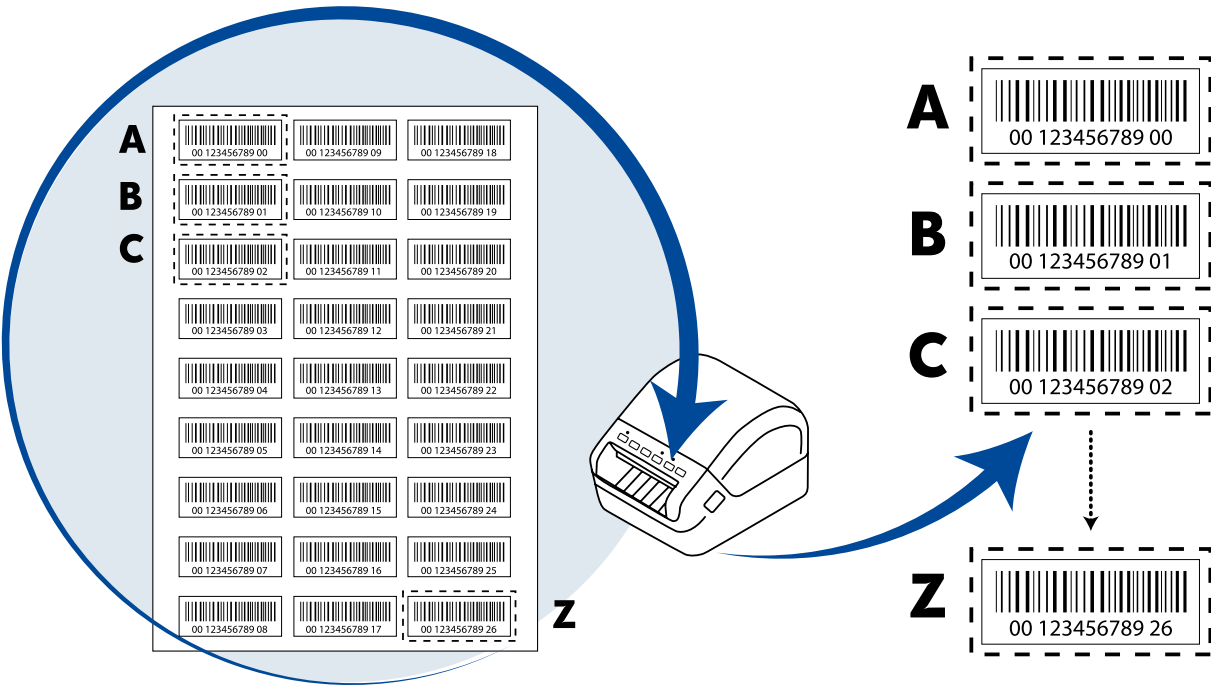
Create labels with black print up to three feet in length, from PC, Mac®, iOS or Android™ devices. All models allow easy connection to desktop computers using USB. The flagship Brother QL1110NWB also adds Wireless, Ethernet and Bluetooth® wireless connectivity.

For developers and systems integrators looking to incorporate label printing as part of their solutions, software development kits for Windows, iOS and Android offer an easy way to add support for the Brother label printers.



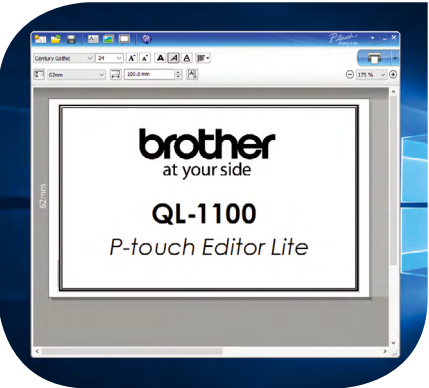
## Auto Crop *Windows only*

The Auto Crop feature on the QL1100NWB automatically identifies and crops individual labels (including barcodes) from a A4/ Letter sized sheet and prints each label one by one. You can print the entire sheet of labels to the QL1100NWB individually or select a section of labels using the snapshot feature and only the selected labels will print individually. This is a great feature for product labels or other labels that sheet formats are already generated. Now you can easily print only the labels you need quickly.



## Software solutions

With label design apps for desktop PC's and mobile devices, and SDK's to integrate the QL range into your own applications, you can choose the best option for your label printing needs.

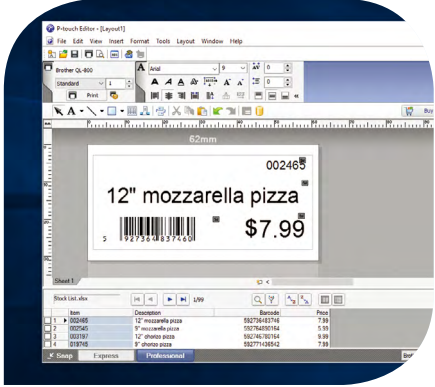


### P-touch Editor Lite / P-touch Editor Lite LAN

Built inside the label printer, this easy to use label design software works without the need to install software or drivers. Working like a USB flash drive, simply connect to your PC using USB, and launch the software from the drive that appears. Include images, frames and any of your fonts on your label design and print! A version for network connected models is also available - simply run the software to allow many PC's in an office to print labels to the one printer. Again, no installation needed.

### P-touch Editor with Microsoft Office add-in

Design professional labels including images and logos, barcodes and frames. Link to data contained in Excel or .csv files, to print many labels quickly and efficiently. The Microsoft Office add-in lets you highlight, click and print right from within Word, Excel, or Outlook.

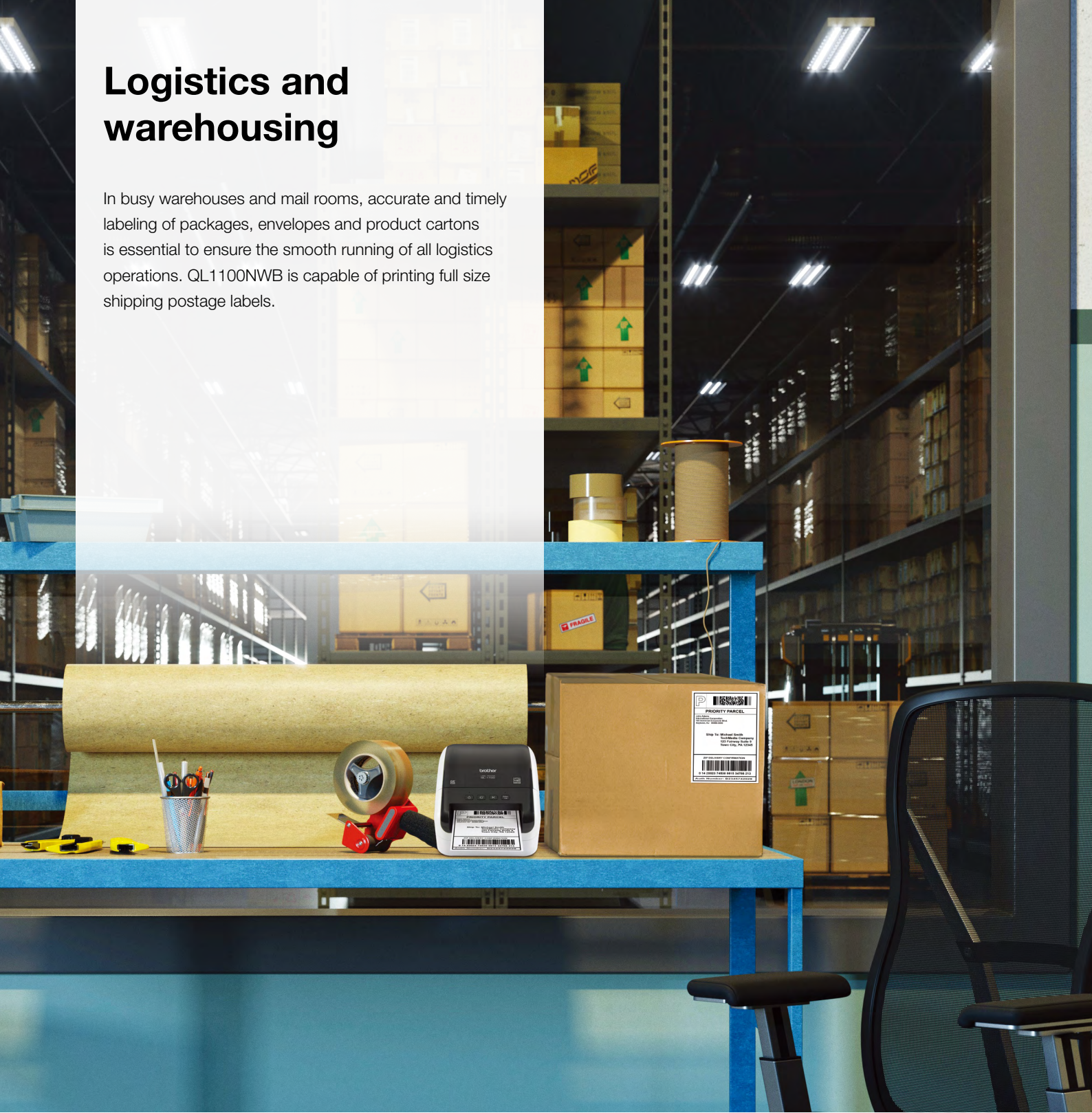
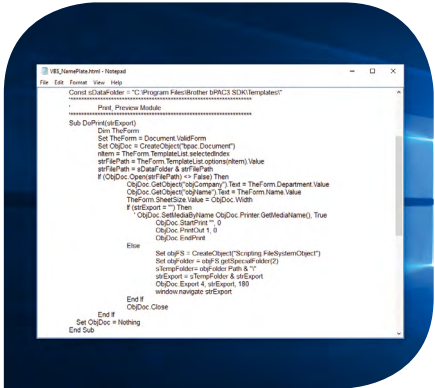


### Brother iPrint&Label app\*\* for iOS and Android smartphones/tablets

Print labels by using the free iPrint&Label app. Connect via Wi-Fi or Bluetooth®, and choose one of the pre-defined templates or quickly design your label from scratch. This free app is available from your mobile device's app store by searching "Brother iPrint&Label".

### Software Development Kits for Windows, iOS and Android

System integrators and software developers can now take advantage of various Brother SDK's that allow easy integration of label printing directly within their own apps and software.



## Logistics and warehousing

In busy warehouses and mail rooms, accurate and timely labeling of packages, envelopes and product cartons is essential to ensure the smooth running of all logistics operations. QL1100NWB is capable of printing full size shipping postage labels.



Handling labels



Postage labels



Shipping labels



Product packaging