



RJ Mobile Printers

The Brother Mobile print portfolio offers high quality thermal printing in the form of 102mm (or less) receipts or labels and fits the requirement of a wide range of vertical market applications.

- Up to 118mm sized receipt AND label printing in a rugged design (IP54 Certification)
- Fast Print speed – 5 ips (inch per second)/127mm per second
- Direct Thermal – no ink or toner needed
- Wide range of connectivity options – USB, Serial, Bluetooth technology WiFi wireless connectivity
- Wide range of accessories available – Optional vehicle mount, 4-bay battery charger and so much more*

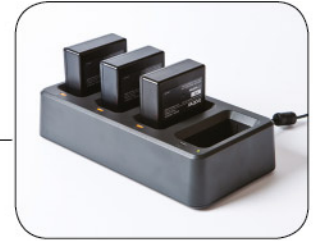
*Please note that not all accessories are available for all models

Designed with Versatility in Mind

The RJ Series was designed after listening closely to the needs of our customers while building new innovative features into the product that would help achieve their emerging application requirements. A comprehensive accessory offering together with a 51mm, 25mm, 8mm and 102mm print capability on label, AND receipt extend the capability of the RJ series enabling it to fulfil a number of requirements across a range of vertical markets.... One machine fits all!



USB, Serial Bluetooth and WiFi to handle applications on site or outdoors.



Choice of power options including rechargeable batteries, AC adapters or vehicle power kits.



Add the optional power charging car kits



Versatile – print both labels AND receipts up to 118mm wide on one printer!



Over the shoulder straps and belt clips available for ease of movement while printing in the field.



Highly reliable direct thermal technology uses fewer moving parts resulting in lower maintenance and running costs.

The compact, ergonomic and lightweight design of the RJ series allows the printer to fit in places where space is limited, and accessories are available for in-vehicle mounting or carrying in the field.



Easy use and navigate through an intuitive colour screen (RJ-3150 only)



USB, Bluetooth, WiFi and AirPrint to handle applications on site or outdoors.



Choice of power options including rechargeable batteries, AC adapters or vehicle power kits.



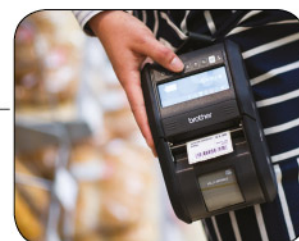
Add the optional power charging car kits



Versatile – print both labels AND receipts up to 118mm wide on one printer!



Over the shoulder straps and belt clips available for ease of movement while printing in the field.



Highly reliable direct thermal technology uses fewer moving parts resulting in lower maintenance and running costs.

Truly Rugged Solution

Mobile IT equipment is rated according to international standards for ingress protection (IP). IP Codes classify the degrees of protection provided by electrical enclosures from dust, water and impact. IP54 means that the equipment will operate in dusty conditions, and will resist splashing water. In addition to the above, the machine has also undergone 1.8m drop tests to provide extra credibility in terms of toughness and reliability.

Due to the nature of many mobile applications, printers may be exposed to a range of outdoor conditions which can affect the print operation or cause damage e.g. traffic warden printing in the field. However, RJ carries IP54 certification offering that extra piece of mind for such outdoor applications subject to damp/moisture or maybe indoor environments where dust is present i.e. warehouse applications. The Brother RJ accessory options can also offer further protection.

The very nature of thermal print technology also adds value to the general reliability of New RJ series. Customer feedback would suggest that thermal print technology is the only feasible solution for mobile workers because it is less susceptible to fluctuating seasonal temperatures and humidity extremes than inkjet technologies.



	RJ3050	RJ3150	RJ4030	RJ4040
127mm/sec Print Speed	✓	✓	✓	✓
203 x 200 dpi Print Resolution	✓	✓	✓	✓
Integrated Automatic Label Peeler	-	✓	-	-
LED Status Indicators	✓	-	✓	✓
Full Colour LCD Display	-	✓	-	-
Maximum Roll Width	80mm	80mm	118mm	118mm
IP54 Certification	✓	✓	✓	✓
1.8 metre Drop Protection	1.2m	1.8m	1.8m	1.8m
USB Interface	✓	✓	✓	✓
Serial Interface	-	-	✓	✓
Bluetooth Interface	✓	✓	✓	-
WiFi Interface	✓	✓	-	✓
AirPrint	✓	✓	-	✓



RJ Series

The two new RJ-3 Models complement the existing Brother mobile print line up, which also includes the PJ700 Series (compact A4 thermal printer). With its growing commitment to mobility, Brother can now offer a full product range to address a wide range of mobile print applications requiring up to 118mm rolls, cut sheet output and full page A4 output in many different environments.

Again, like the other printers in the Brother mobile portfolio, the RJ range uses direct thermal printing technology, which provides several benefits including higher reliability & lower maintenance cost due to fewer moving parts and no ink toner/ribbon to replace.

With a staggering print speed of 5ips/127mm, the RJ series can provide the ultimate solution which not only meets but exceeds industry expectations where efficiency of field professionals is paramount. This impressive print output can mean less wasted time, higher productivity, and increased customer satisfaction.

Technical Specifications

	RJ3050		RJ3150		RJ4030		RJ4040	
Printing								
Print Resolution	203 x 200 dpi							
Print Technology	Direct thermal							
Printing Speed	Maximim 127mm/second (under Brother standard evironment *1)							
Paper Feed Method	Roll feed							
Maximum Print Width	72mm				104mm			
Maximum Print Length	1 metre				3 metres			
1.8 metre Drop Protection	1.2m		1.8m		1.8m		1.8m	
Roll Width – Max/Min	80mm / 25mm				118mm / 51mm			
Maximum Roll Diameter	66mm				58mm			
General								
Dimensions (W x H x D)	113 x 80 x 186mm		118 x 82 x 189mm		162 x 77 x 176mm			
Weight	600g		670g		880g			
Battery	Rechargeable Li-ion Battery							
Interface								
USB	Standard							
Serial	n/a				Standard			
Bluetooth (Ver. 2.0 + EDR)	Standard						n/a	
WiFi (802.11 b/g/n)	Standard				n/a		Standard	
AirPrint	Yes		Yes		n/a		Yes	
Software Support								
Windows OS driver support	See http://support.brother.com for latest information							
SDKs	Android 2.3 or later IOS 5 or later				Windows® CE 5.0 or later Windows® Mobile 5/6/7, Android 2.2 or later			
Supported Commands	P-touch Template 2.0, Raster, ESC/P							
Emulation Compatibility	ZPL II® / CPCL							
Memory								
RAM	32MB							
Flash	32MB				16MB			
Environmental								
Sealing Certification	IP54							
Drop Protection	1.2m		1.8m					
Accessories								
Li-ion rechargeable battery	PA-BT-001-B		PA-BT-001-A		PA-BT-4000Li			
AC Adaptor	PA-AD-600							
12V car adaptor (in-car socket)	PA-CD-600CG							
12V car adaptor (permanently wired)	PA-CD-600WR							
4 bay battery charger cradle	-				PA-4BC-4000			
Single battery charger cradle	PA-BC-001				-			
Printer car mounting kit	PA-CR-001				PA-CM-4000			
Shoulder strap	PA-SS-4000							
Weather case	-				PA-WC-4000			
Magnetic card reader	-				PA-MCR-4000			

*1 Figures quoted depend on operating environment. "Brother standard environment" is based on connectivity via USB with fully charged new battery at 23 degrees C. (7% coverage - 100mm X 150mm)



Brother Mobile
Solutions RJ-
4040 Print app



IP54 Resistant
to Dust & Water



Bluetooth® &
Wi-Fi®



AirPrint and the AirPrint logo
are trademarks of Apple Inc.

brother
at your side



Brother International (HK) Ltd.

Unit 620-622 & 626, 6/F., Ocean Centre, 5 Canton Road, Tsimshatsui, KLN, H.K.

☎ Hotline : 3187 0500

www.brother.com.hk

RJ001